

NHS Acute Trusts Survey of Outpatient Departments 2003

George Eliot Hospital NHS Trust

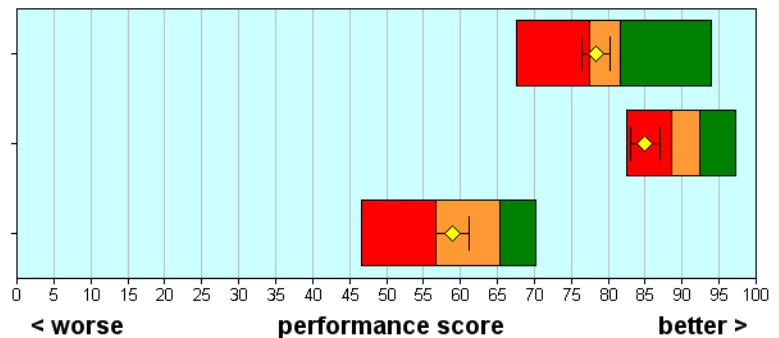
For details on how to interpret these charts and tables, please refer to the document on the patient survey results section of the CHI website. The trusts results are not shown where there are fewer than 30 responses to a question.

Access and waiting

How long did you wait to get an outpatient appointment?

Was your appointment changed by the hospital?

How long did you wait in the outpatients department before the appointment started?



Safe, high quality, coordinated care

Before your appointment, did you know who to contact if your symptoms got worse?

Did you have confidence and trust in the doctor?

Was the doctor aware of your medical history?

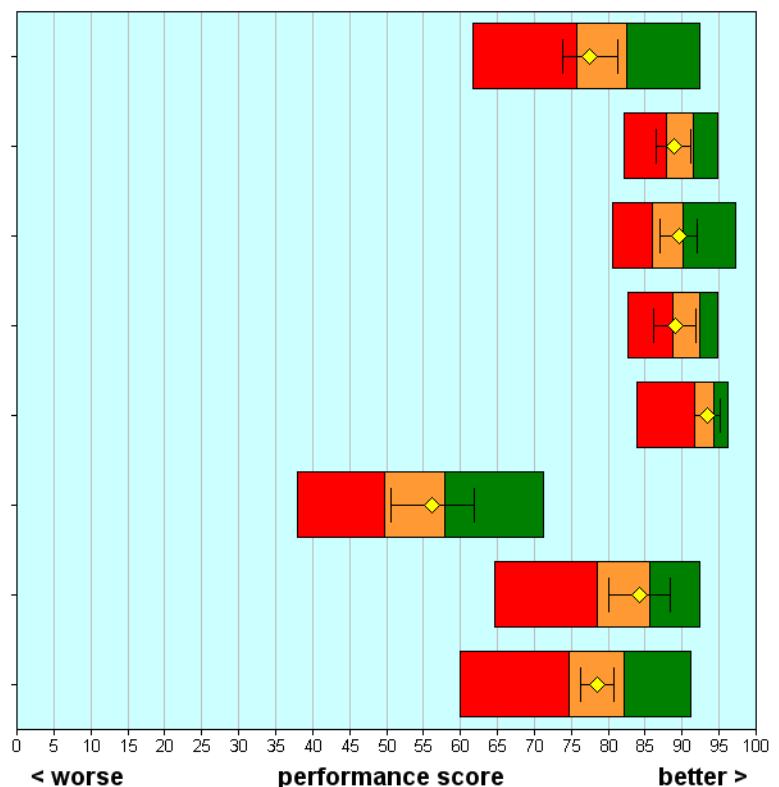
Did you have confidence/trust in other healthcare professionals?

Did different members of staff give conflicting information?

Were you told about danger signals to watch for after going home?

Were you told who to contact after going home, if worried about condition/treatment?

How well organised was the outpatients department?



- Best performing 20% of trusts
- Intermediate 60% of trusts
- Worst performing 20% of trusts

This trust (trust's score shown as a yellow diamond, with 95% confidence intervals marked by vertical lines on either side)

NHS Acute Trusts Survey of Outpatient Departments 2003

George Eliot Hospital NHS Trust

Better information, more choice

Before your appointment, did you know the reason for the appointment?

Did doctors explain the reasons for any treatment/action?

Were you given the right amount of information about your condition/treatment?

Were you involved in decisions about your care and treatment?

Did staff explain why any tests were needed?

Did staff tell you how you would find out the results of tests?

Did staff explain the results of tests?

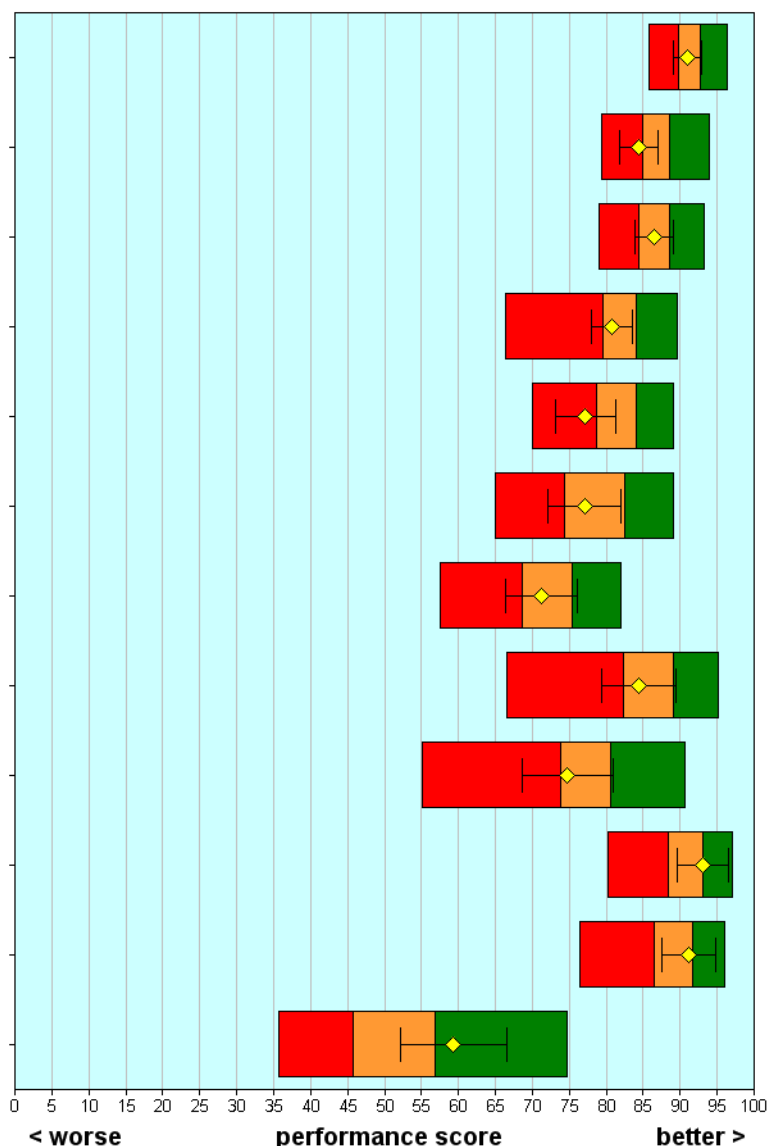
Did staff explain what would happen before any treatment?

Did staff explain the risks/benefits before any treatment?

Did staff explain how to take any new medications?

Did staff explain the purpose of any medications given to take at home?

Did staff tell you about medication side effects?



■ Best performing 20% of trusts
■ Intermediate 60% of trusts
■ Worst performing 20% of trusts

◆ This trust (trust's score shown as a yellow diamond, with 95% confidence intervals marked by vertical lines on either side)

NHS Acute Trusts Survey of Outpatient Departments 2003

George Eliot Hospital NHS Trust

Building relationships

Did you have enough time to discuss your problem with the doctor?

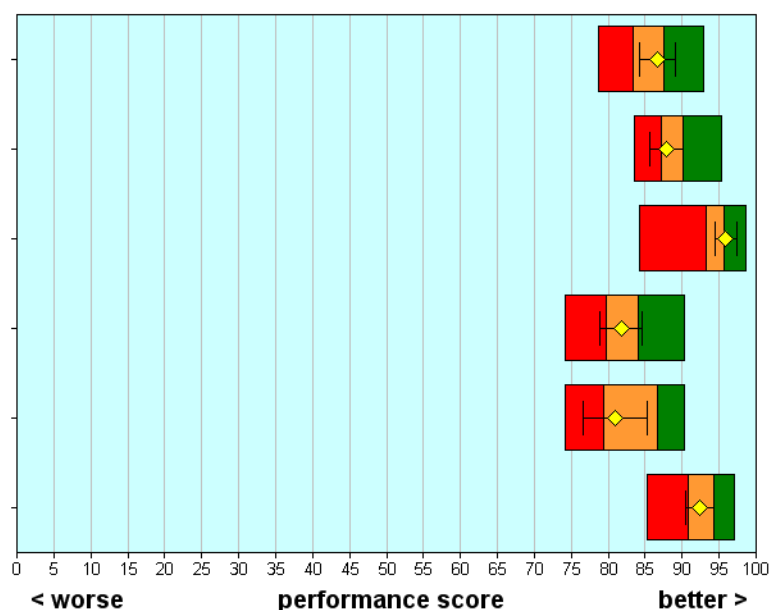
Did the doctor listen to what you had to say?

Did you think the doctor was deliberately not telling you things you wanted to know?

Did the doctor answer your questions clearly?

Did other health care professionals answer your questions clearly?

Did doctors/other staff talk in front of you as if you weren't there?



Clean, comfortable, friendly place to be

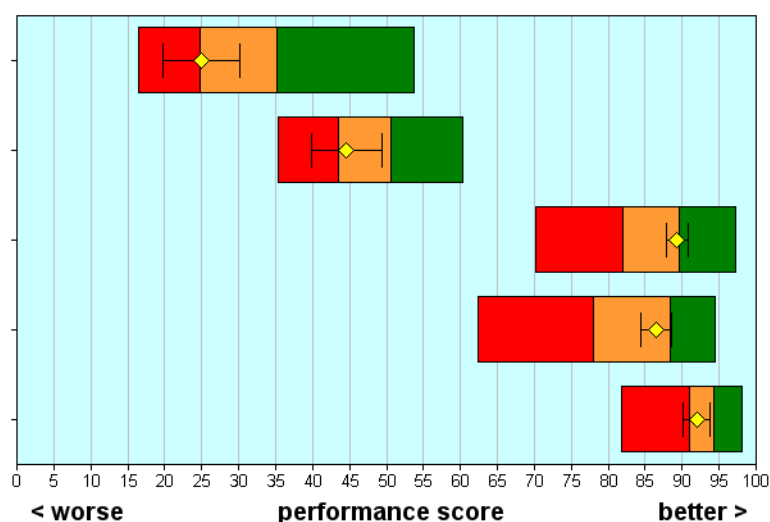
Were you told how long you would have to wait for the appointment to start?

Were you told why you had to wait?

How clean was the outpatients department?

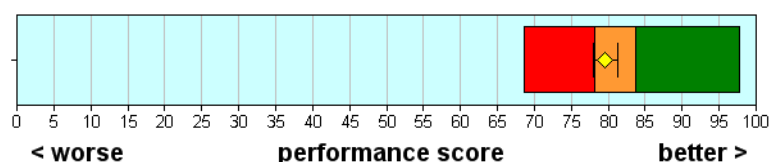
How clean were the toilets in the outpatients department?

Were you treated with respect and dignity?



Overall impression

Overall, how would you rate the care received in the outpatients department?



- Best performing 20% of trusts
- Intermediate 60% of trusts
- Worst performing 20% of trusts

◆ This trust (trust's score shown as a yellow diamond, with 95% confidence intervals marked by vertical lines on either side)

NHS Acute Trusts Survey of Outpatient Departments 2003

George Eliot Hospital NHS Trust

		Scores for this NHS Trust		95% Confidence Intervals		Highest score achieved (all Trusts) Threshold score for the best 20% of NHS Trusts	Number of respondents (this Trust)
		Lower	Upper				
Access and waiting							
A1	How long did you wait to get an outpatient appointment?	78	76	80	82	94	465
A4	Was your appointment changed by the hospital?	85	83	87	92	97	508
B1	How long did you wait in the outpatients department before the appointment started?	59	57	61	65	70	500
Safe, high quality, coordinated care							
A3	Before your appointment, did you know who to contact if your symptoms got worse?	78	74	81	82	92	505
D8	Did you have confidence and trust in the doctor?	89	87	91	91	95	436
D9	Was the doctor aware of your medical history?	90	87	92	90	97	412
E4	Did you have confidence/trust in other healthcare professionals?	89	86	92	92	95	241
F5	Did different members of staff give conflicting information?	93	92	95	94	96	502
H5	Were you told about danger signals to watch for after going home?	56	51	62	58	71	246
H6	Were you told who to contact after going home, if worried about condition/treatment?	84	80	88	86	92	293
J1	How well organised was the outpatients department?	79	76	81	82	91	501
Better information, more choice							
A2	Before your appointment, did you know the reason for the appointment?	91	89	93	93	96	508
D4	Did doctors explain the reasons for any treatment/action?	84	82	87	89	94	410
F4	Were you given the right amount of information about your condition/treatment?	86	84	89	89	93	490
F6	Were you involved in decisions about your care and treatment?	81	78	84	84	90	502
G2	Did staff explain why any tests were needed?	77	73	81	84	89	304
G3	Did staff tell you how you would find out the results of tests?	77	72	82	82	89	284
G4	Did staff explain the results of tests?	71	66	76	75	82	240
G6	Did staff explain what would happen before any treatment?	84	79	89	89	95	140
G7	Did staff explain the risks/benefits before any treatment?	75	69	81	81	91	132
H2	Did staff explain how to take any new medications?	93	90	97	93	97	151
H3	Did staff explain the purpose of any medications given to take at home?	91	88	95	92	96	149
H4	Did staff tell you about medication side effects?	59	52	67	57	75	141

NHS Acute Trusts Survey of Outpatient Departments 2003

George Eliot Hospital NHS Trust

	Scores for this NHS Trust	95% Confidence Intervals		Highest score achieved (all Trusts) Threshold score for the best 20% of NHS Trusts		Number of respondents (this Trust)
		Lower	Upper			
Building relationships						
D2 Did you have enough time to discuss your problem with the doctor?	87	84	89	88	93	440
D5 Did the doctor listen to what you had to say?	88	86	90	90	95	439
D6 Did you think the doctor was deliberately not telling you things you wanted to know?	96	94	97	96	99	439
D7 Did the doctor answer your questions clearly?	82	79	85	84	90	374
E3 Did other health care professionals answer your questions clearly?	81	77	85	87	90	168
F3 Did doctors/other staff talk in front of you as if you weren't there?	92	91	94	94	97	494
Clean, comfortable, friendly place to be						
B2 Were you told how long you would have to wait for the appointment to start?	25	20	30	35	54	248
B3 Were you told why you had to wait?	45	40	49	51	60	247
C1 How clean was the outpatients department?	89	88	91	90	97	512
C2 How clean were the toilets in the outpatients department?	87	84	89	88	94	329
J2 Were you treated with respect and dignity?	92	90	94	94	98	502
Overall impression						
J3 Overall, how would you rate the care received in the outpatients department?	80	78	81	84	98	503

NHS Acute Trusts Survey of Outpatient Departments 2003

George Eliot Hospital NHS Trust

Background Information

The sample	This trust	All trusts
Number of respondents	516	90552
Response rate (percentage)	61	63
Demographic characteristics	This trust	All trusts
Gender (percentage)	(%)	(%)
Male	45	42
Female	55	58
Age group (percentage)	(%)	(%)
Aged 16 - 35	13	11
Aged 36 - 50	15	18
Aged 51 - 65	36	29
Aged 66 or older	36	42
Ethnic group (percentage)	(%)	(%)
White	93	90
Mixed	0	0
Asian or Asian British	2	2
Black or Black British	0	2
Chinese or other ethnic group	0	0
Not known	4	5